

FEMA REGION X
RISK MAP DISCOVERY INTERVIEW
CITY OF PATEROS, WASHINGTON
March 27, 2015 11:00 AM PST

Participating

City of Pateros

- Jord Wilson, City Administrator

FEMA Region X

- Ted Perkins

STARR (FEMA Contractor)

- Becca Fricke-Croft (meeting host)
- Troy Sova
- Andy Dobson

Discussion

Becca Fricke-Croft made introductions and presented an overview of the RiskMAP program and the different projects and products that can benefit communities. Our overall goal is discovering how FEMA can help Pateros be a more hazard and disaster-resilient community. A copy of the presentation is included with these meeting notes as Appendix A.

Pre-Discovery meetings and interviews with Pateros have been scheduled throughout March and April, 2015. The Discovery Meeting is scheduled for the week of May 4 – 6, 2015.

The following information was collected during the interview. Unless otherwise noted, all comments are from the City of Pateros representatives.

Confirm contact information

- Contact information was updated for Mayor George Brady. Jord doesn't have other contacts for us now.

Confirm collected data

- Troy Sova had a question on the political boundary data STARR has and whether it is the most accurate.
- Floodplain data available is Q3 data captured off of old paper FIRMs. Troy and Jord don't know of any better or more accurate available flood mapping.

**FEMA REGION X
RISK MAP DISCOVERY INTERVIEW
CITY OF PATEROS, WASHINGTON**

- Okanogan County has updated aerial photography from what is being used during this interview. STARR will be adding it to maps as it becomes available.
- Jord Wilson had some comments and questions. The Fire Hall indicated on our map is actually City Hall. Jord marked the correct location for the fire station, an adjacent petroleum storage facility, School, City Wells and Reservoirs.
- The City of Pateros does not have GIS or dedicated GIS staff. GIS data provided by County.

Planning

- Structures and facilities most valuable to the community
 - Industrial area along river Northeast side of City—apple packing and processing facilities
 - Waterfront area has multiple city parks—important for community quality of life and tourism trade from Canada and west side of Washington for parks and downtown area.
 - RV Park areas for campers and hunters during summer
 - Two Downtown motels in city with total of 60 rooms
 - Condo/part-time housing
- Status of FEMA Hazard Mitigation Planning projects
 - Pateros participating in Okanogan County hazard mitigation plan project by others (Jord was not personally involved, but is familiar with plan)

Earthquake Hazard

- Risk level/concern
 - Does not appear to be much of a concern for the community, a few tremors in 45 years.
- Vulnerable locations
 - Water reservoirs on the north side of City impacted by strong tremor.

Wildfire Hazard

- Risk level/concern
 - Pateros area is very susceptible to wildfire, very high hazard
 - The Carlton Complex Fire destroyed 33 homes near Ives St. and reached city limits on all sides.
- Vulnerable locations
 - Entire community is vulnerable
- Mitigation projects or initiatives
 - City may be working with Firewise program along with a mitigation plan. They have a few years before hazard becomes critical again (everything that could burned last year)
 - Need for backup electricity generation—during Carlton fire Pateros was cut off from electrical grid for eight days
 - Need for fresh water storage, both for drinking and firefighting. During Carlton fire the City ran out of water after two hours within the storage tanks and lines.

**FEMA REGION X
RISK MAP DISCOVERY INTERVIEW
CITY OF PATEROS, WASHINGTON**

Landslide Hazard

- Risk level/concern
 - Jord marked up the discussion map with landslide locations. Many steep slopes immediately north of town are susceptible--heavy rains cause slides all the way to city limits along the gullies. Unknown geologic assessments.
- Vulnerable locations, neighborhoods, infrastructure
 - North city limits are immediately adjacent to steeply sloped areas and any of these areas are vulnerable to slides. No new development near landslide area.
- Mitigation projects or initiatives
 - Some culverts and catch basins have been constructed to intercept storm flows in key areas along US 97.

Severe Storm Hazard

- Risk Concern
 - Steep slopes produce flows out of gullies
- Shelter needs and facilities
 - Use local church and school buildings as needed during storm events
 - City power supply comes from one power station toward the southwest with one substation; community can be cut off easily without quick access to alternate power sources. Fire Hall & School needs backup generator. WWTP, City Hall, & Water Wells/reservoirs has backup generator
- Communication and warning systems
 - Radio, useful when town is cut off from internet service, KOZI radio station, City Hall becomes emergency command center during events. Potential for Website. Signage placed around City.

Flood Hazard

- FIRM comments, revisions, questions
 - 1972 significant flood in Methow River, was able to be contained without significant damage
 - At east end of town, a few houses at bottom of draw are vulnerable to flooding
- Are there any new floodplain studies underway?
 - May be some done for the Methow River, but Jord has not seen them
- Other flooding issues or concerns
 - Methow River responsible for more flooding in community compared to Columbia River
 - Post-fire concern with flooding related to increased storm water runoff from hillsides along landslides prone areas.
- Mitigation Initiatives/Outreach
 - No active NFIP insurance activity.

**FEMA REGION X
RISK MAP DISCOVERY INTERVIEW
CITY OF PATEROS, WASHINGTON**

- Riverside Drive area has been raised above Pool Level from Columbia – Columbia River controlled downstream by Wells Dam

Levees

- Other levees or flood control structures
 - No levees

Environmentally Sensitive Areas

- Areas identified in the community, others not shown on the map
 - None identified besides State resources

Communications and Outreach

- Current community outreach/engagement
 - Bill stuffers and newsletters
 - Electronic reader board where meeting announcements are posted
 - Public announcements at town council meetings
 - City Website – Post activities/events
 - KOZI radio
- Use of RiskMAP products for outreach, communication, and education
 - Very interested in any materials and tools FEMA can provide

Compliance and Training

- Floodplain administrator
 - No mapped SFHA in Pateros. If there were any, need for floodplain administration would probably come through Building Inspector.

Next Steps

- Discovery Meeting arrangements were discussed. Brewster and Bridgeport were mentioned as communities could group with Pateros in one meeting.
- Jord asked who we recommend attend the meeting from the City. Becca answered that anybody who could help inform the team about hazards and other issues discussed today would be very welcome.
- Jord suggested Pateros representatives could attend City of Okanagon meetings as it is an easy drive from Pateros.

Appendix A: Interview Presentation



FEMA

Risk MAP Discovery

Okanogan & Wenatchee Watersheds

Information Exchange Sessions
March/April 2015

RiskMAP

Increasing Resilience Together



Information Exchange Agenda

- **Overview of Risk MAP and Discovery**
- **Introduction to Enhanced Risk MAP Products**
- **Interactive Questionnaire**
- **Close**

The Vision for Risk MAP

Through collaboration with State, Local, and Tribal entities, Risk MAP will deliver quality data that increases public awareness and leads to action that reduces risk to life and property



RiskMAP

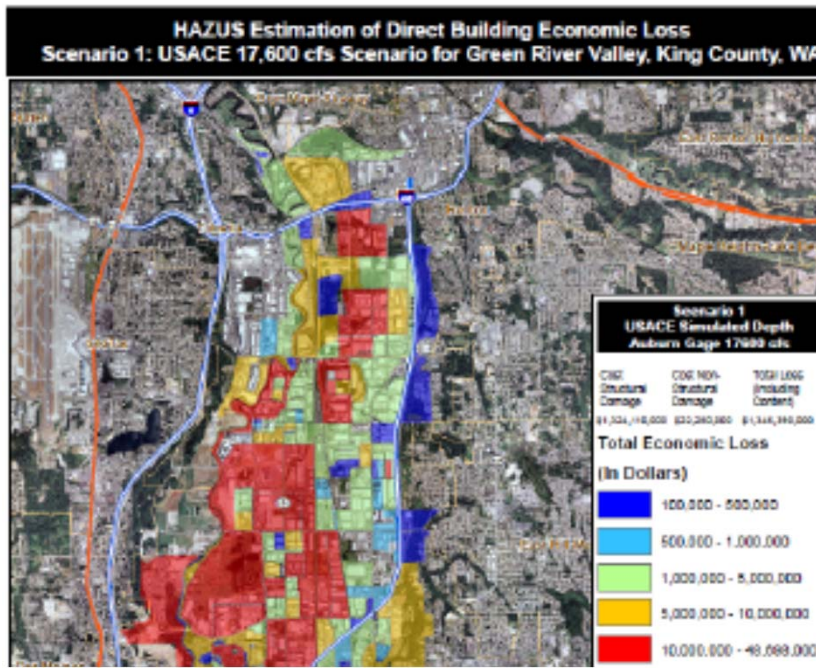
Increasing Resilience Together

- Collaborative approach
- Goals: quality data, public awareness, action that reduces risk
- Watershed-oriented
- Multi-Hazard
- Focus on up-front coordination
- Discovery is mandatory

Risk MAP Products

Multi-Frequency Depth & Water-Surface Elevation (WSE) Grids

10%, 2%, 1%, 0.5%, 0.2% annual chance profiles



Inundation

- 3 feet or less
- 3 to 6 feet
- 6 feet +

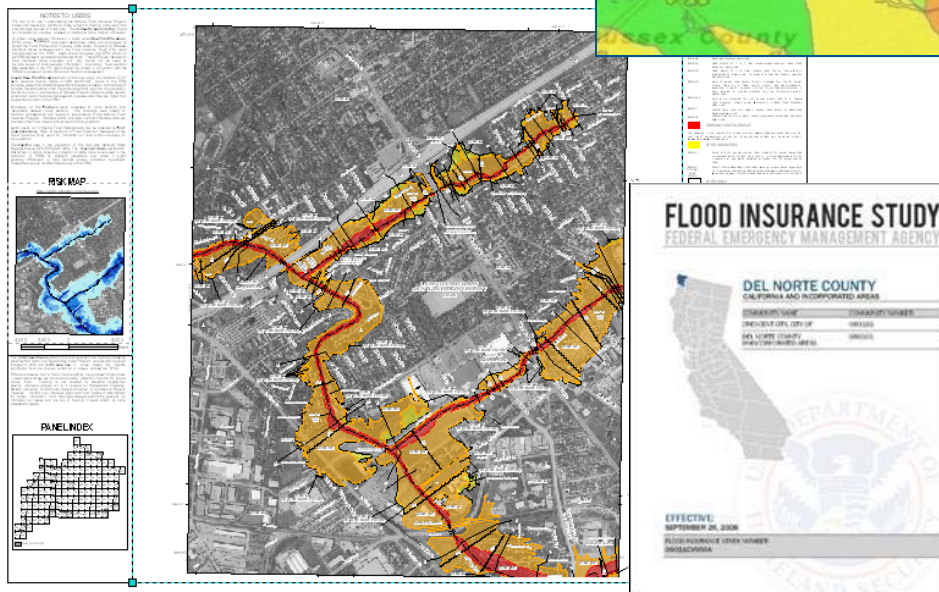
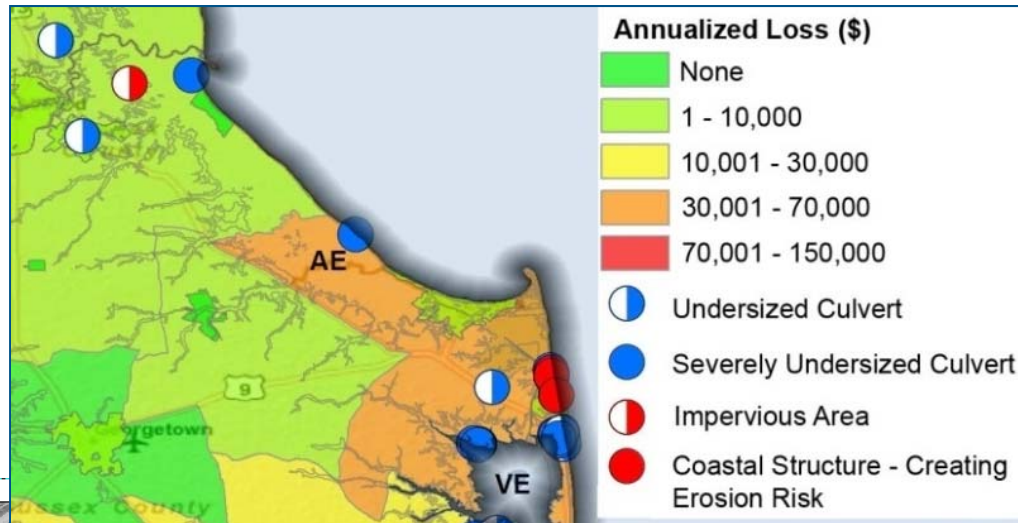
HAZUS Risk Assessment & National Flood Risk Layer

Enables communities to understand risk by reference to existing structure loss

Risk MAP Products

Contributing Hazard Factors

Highlights areas of concern identified throughout project



FIS Reports and DFIRM Maps

DFIRM and FIS will continue to fulfill regulatory requirements and support the NFIP

Discovery

Discovery is the process of data collection and analysis with the goal of initiating a hazard risk or mitigation project and risk discussions within the watershed

When:

- After an area/watershed has been prioritized
- Before a Risk MAP project is scoped or funded

Required for new and updated...

- Flood studies
- Flood risk assessments
- Mitigation planning technical assistance projects

Why:

- Increases visibility of flood risk information, education, involvement
- Helps inform whether a Risk MAP project will occur in the watershed



Okanogon & Wenatchee Discovery

- **Federal and State Data Collection**
- **Local Issues: Identify Risk MAP Needs**
 - Need support with mitigation planning?
 - Need mitigation projects?
 - Need new flood study data?
 - Need training on floodplain management?
 - Need support developing a hazard risk outreach program?
 - What else can FEMA do to help your community become resilient?
- **Pre-Discovery Interviews: March/April 2015**
- **Discovery Meetings: May 4-6, 2015**
- **Risk MAP Project(s) Identified**
- **Possible FEMA Funding Allocated for Risk MAP Project**

Discovery Interview

- **Local Contacts**
- **Data**
 - LiDAR
 - Local or Regional GIS Data
- **Mitigation Planning**
 - Desired Mitigation Projects
- **Local Hazards**
 - Earthquakes
 - Wildfires
 - Landslides
 - Severe Storms
 - Flooding
- **Levees**
- **Environmentally Sensitive Areas**
- **Communications and Outreach**
- **Compliance and Training**

Mitigation Planning		
How would you describe your level of involvement with the development of the mitigation plan? (Considerable, Moderate, Minimal)	Do you need assistance with mitigation planning in your community? (Yes, No, Possibly)	Mitigation Planning Comments, Explanations, Questions

Questions?

FEMA

- **Amanda Siok, Risk Analyst, amanda.siok@fema.dhs.gov**
- **Kristen Meyers, Mitigation Planner, kristen.meyers@fema.dhs.gov**
- **Ted Perkins, Regional Engineer, dwight.perkins@fema.dhs.gov**

WASHINGTON

- **Jerry Franklin, State Risk MAP Coordinator, jfra461@ecy.wa.gov**
- **Michelle Gilbert, Floodplain Management Specialist, migi461@ecy.wa.gov**

STARR

- **Emily Whitehead, emily.whitehead@stantec.com**
- **Troy Sova, troy.sova@stantec.com**
- **Becca Fricke-Croft, becca.croft@starr-team.com**