

**FEMA REGION X
RISK MAP DISCOVERY INTERVIEW
CITY OF CASHMERE, WASHINGTON
April 1, 2015 10:00 AM PST**

Participating

City of Cashmere

- Mark Botello, Director of Planning & Building

State of Washington

- Jerry Franklin, Department of Ecology

FEMA Region X

- Ted Perkins, Region X Engineer
- Amanda Siok, Region X Risk Analyst

STARR (FEMA Contractor)

- Becca Fricke-Croft, Meeting Host
- Troy Sova, Senior GIS Analyst
- Emily Whitehead, Project Manager
- Josha Crowley, Regional Service Center (RSC) Lead

Discussion

Becca Fricke-Croft made introductions and presented an overview of the RiskMAP program and the different projects and products that can benefit communities. Our overall goal is discovering how FEMA can help Cashmere become a more hazard and disaster-resilient community. A copy of the presentation is included with these meeting notes as Appendix A.

Pre-Discovery meetings and interviews with communities within the Wenatchee Watershed have been scheduled throughout March and April, 2015. Conducting pre-meeting interviews with communities helps us to better prepare for the in-person local Discovery meetings. The Discovery Meeting is scheduled Wednesday, May 6, 2015. Following the Discovery interview and meeting, STARR will prepare a report about the information compiled, including recommendations that FEMA may use to help allocate future Risk MAP funding. During the Discovery process, FEMA will be checking-in with and keeping communities informed every step of the way.

The following information was collected during the interview. Unless otherwise noted, all comments are from the City of Cashmere representatives.

Community Contacts

- Mark confirmed our contact information with Becca

Confirm collected data

- Troy Sova discussed the data, in particular GIS base map data that has been collected thus far during Discovery from local, State and Federal resources. He asked if the City has a GIS Department or spatial files that could be shared for this project. Mark responded that he does the GIS for the City but also uses a consultant (RH2 Engineering) for more complex data information and would be willing to share the data.
- Troy made mention of the specific data layers that came from the County were: Political Boundaries, Transportation, Bridges, and Parcels. Additional data may become available before the Discovery Meeting next month.
- Mark is the GIS coordinator for the County, works with a consultant to provide services and data.
 - Pointed out some updates to the draft Discovery Map during the interview, including levee locations and a newly-completed WWTP which should be listed as a critical facility
- State data includes critical facilities such as fire and police stations.
- Floodplain data available is Q3 data captured off of old paper FIRMs via a process referred to as “rubber-sheeting” or “heads-up digitizing”. Mark responded that back in 2004 FEMA came to the City and updated floodplains. Study date is 9/30/2004.
 - Update included only the City of Cashmere and not Chelan County
- Wish list: environmentally sensitive areas, building footprints, any new aerial photography—what we have dates from 2006
 - Cashmere Mill site mentioned by Mark, owned by Port of Chelan County
 - No building footprint data available

Fact Sheets and Interview Maps

- The group discussed needing update corporate boundaries, ideally prior to the Discovery Meeting based on the current information from the County.
- Mark made some comments and annotations to the draft Discovery Map
 - Added WWTP at the southeast end of town adjacent to levee
 - Added local airport location
 - Noted location of three levees and confirmed that they are inspected with USACE annually
 - Noted location of water reservoirs on hills overlooking town as critical facilities
 - Water treatment plant and airport are also critical facilities
- Old Cashmere Mill on west side of town received grant money for environmental cleanup—budget for project approx. \$8 million
 - State funded
 - 4-5 year project
 - Cleanup mostly complete

**FEMA REGION X
RISK MAP DISCOVERY INTERVIEW
CITY OF CASHMERE, WASHINGTON**

- Adjacent to Brender Creek
- 36-acre property
- Annotated on draft map, will refine boundary at Discovery Meeting

During the final half of this interview, Becca will be asking questions designed to spark discussion with the City of Omak regarding Resilience.

What is Valuable to the City of Cashmere?

- Agriculture based community, lots of orchards and packing facilities
- Small City with a little over 3,000 residents
- Small volunteer Fire Department
- Levees and maintenance of the structures—annual inspection with Army Corps
- Cashmere would be very interested in updated imagery and elevation data for the community
- City has lots of recreational areas
- City parks owns lots of property adjacent to Wenatchee River
- Surrounding hills and canyons popular with mountain-bikers

Planning

- The “Chelan County Multi-Jurisdictional Natural Hazard Mitigation Plan” was revised in 2011 and the City of Cashmere participated and is covered by the plan.
 - Mark was active in developing the plan, coordinated with Chelan County staff along with other communities
- Mark mentioned that the City worked with the County to identify infrastructure, reviewing the plan, presenting to City Council and continue to work closely with the County.
- Chelan County recently began a flood control zone district program and wrote interim operating guidelines to regulate activities in flood-prone areas. A consultant will be developing a Flood Control Zone District Comprehensive Plan for the County.

Earthquake Hazard

- Risk level/concern
 - Some rumbling but little damage experienced. No specific building retrofitting or mitigation plans.

Wildfire Hazard

- Risk level/concern
 - This area has a regular history of wildfires, about every five (5) years a fire typically happens
 - Small fire department has to go up into the canyons to battle the fires. Burned landscape leads to erosion and storm flooding

Vulnerable locations

- Fire department, City administration building and County roadways that go through the City are vulnerable to wildfires

Landslide Hazard

- Risk level/concern
 - No history of landslides inside Cashmere
 - Steep slopes in areas of Rank Road and Valley Street
 - Some potential for development around these steep slopes within the City, but buildable properties are mainly in Chelan County
 - Land development regulations include geo-hazard areas to mitigate landslide concerns

Severe Storm Hazard

- Risk level/concern
 - Wind storms knock over trees which fall into Mission Creek and dam up creek and causes flooding
 - Cashmere does get a good amount of snow and ice from storms which brings down trees and causes some power outages
 - Power loss happens usually every other year but is not out for very long—County Public Utility District does a good job restoring service quickly
 - Cashmere was the last community in Chelan County to have its own utility service—since County took over there have been many upgrades and service improvements
- Shelter needs and facilities
 - No official shelters inside city. Has not been demand or need for shelters.

Emergency Notification System

- Cashmere uses local news, website and contract with Sheriff's Office and Chelan County Emergency Management

Flood Hazard

- FIRM comments, revisions, questions
 - The City does not think that the SFHA is very accurate and Mark noted that there are at least five (5) spots that may need to be re-mapped. New flood studies may be possible for a few reaches
 - Mark pointed out that Mission Creek and Brender Creek floods due to tree debris (damming effect) and ice jams in the winter months
 - Wenatchee River flooding caused by excess volume and water velocity, Highway 2 construction in 1950s altered water channel which contributes to flooding
 - 2004 study resulted in mapping inconsistencies when examining property and inundation areas inside and outside Cashmere city limits.

**FEMA REGION X
RISK MAP DISCOVERY INTERVIEW
CITY OF CASHMERE, WASHINGTON**

- Some storm flooding concerns in neighborhoods immediately adjacent to Mission Creek (highlighted on map)
- Sunset Highway was re-built and a new bridge constructed after the 2004 flood study, could be another reason to update FIS for the entire community.

Levees

- Other levees or flood control structures not shown on the map
 - May need to revise the extent of levees shown on Discovery Maps, Army Corps may have updated mapping data

Communications and Outreach

- Current community outreach/engagement
 - No regular communication with residents
- Who are the key players in communication and outreach to residents
 - Local radio station best outreach partner according to Mark, potentially schools and Chamber of Commerce as well
- Use of RiskMAP products for outreach, communication, and education
 - Would be interested in learning about outreach materials available through FEMA—especially in conjunction with upcoming Chelan County flood hazard district plan

Compliance and Training

- Training and support
 - Mark is the floodplain administration and would be interested in additional training in floodplain management—is not aware of what FEMA offers to local communities

Next Steps

Meeting times and locations were discussed at the close of the interview. Mark said that their staff is flexible, but would prefer a morning meeting if possible. Confluence Technology Center recommended as a meeting location.

Appendix A: Interview Presentation



Risk MAP Discovery

Okanogan & Wenatchee Watersheds

Information Exchange Sessions
March/April 2015

RiskMAP

Increasing Resilience Together



Information Exchange Agenda

- **Overview of Risk MAP and Discovery**
- **Introduction to Enhanced Risk MAP Products**
- **Interactive Questionnaire**
- **Close**

The Vision for Risk MAP

Through collaboration with State, Local, and Tribal entities, Risk MAP will deliver quality data that increases public awareness and leads to action that reduces risk to life and property



RiskMAP

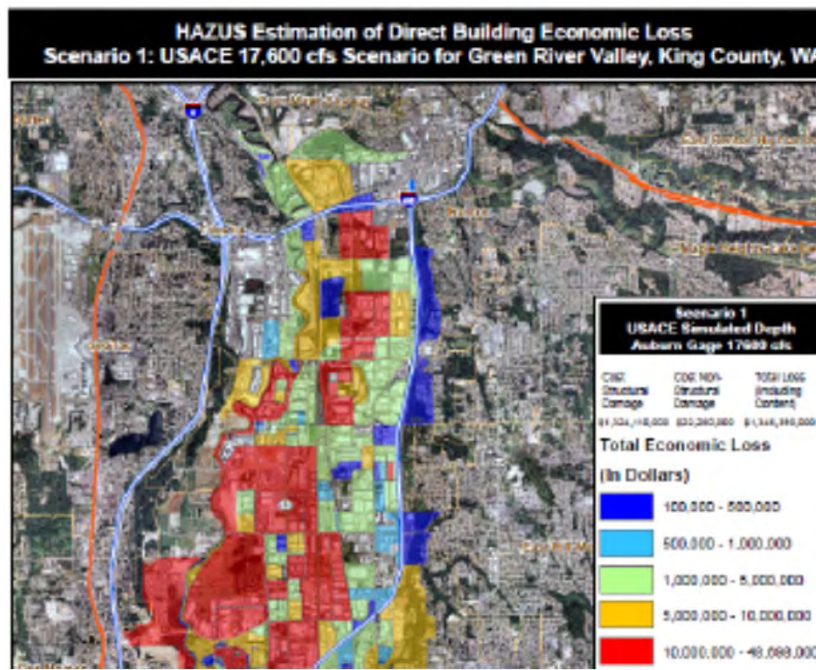
Increasing Resilience Together

- Collaborative approach
- Goals: quality data, public awareness, action that reduces risk
- Watershed-oriented
- Multi-Hazard
- Focus on up-front coordination
- Discovery is mandatory

Risk MAP Products

Multi-Frequency Depth & Water-Surface Elevation (WSE) Grids

10%, 2%, 1%, 0.5%, 0.2% annual chance profiles



Inundation

- 3 feet or less
- 3 to 6 feet
- 6 feet +

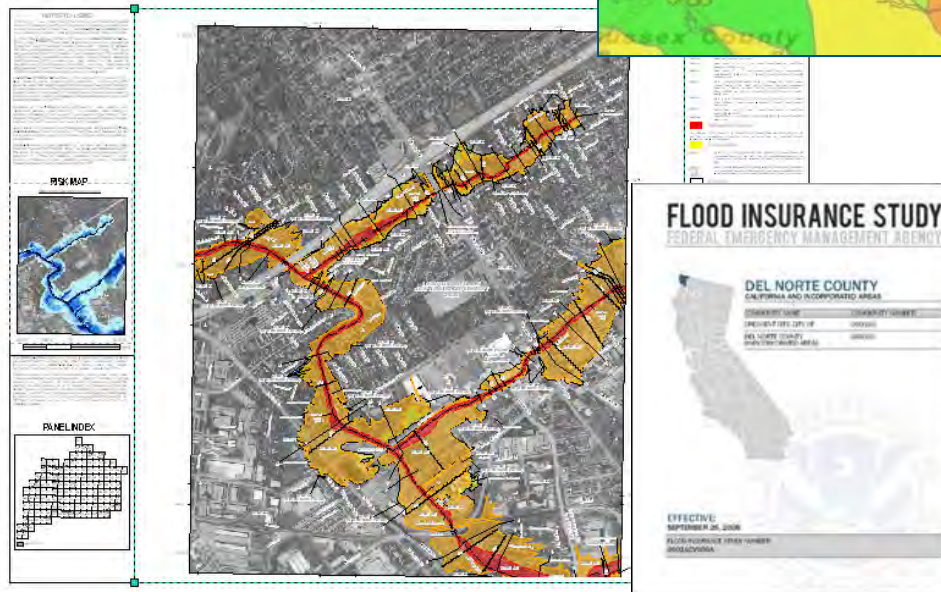
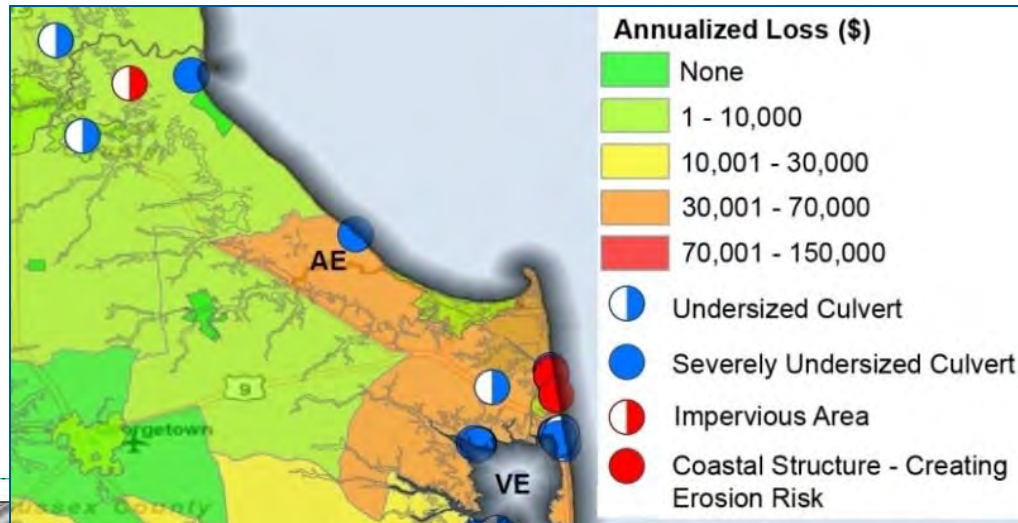
HAZUS Risk Assessment & National Flood Risk Layer

Enables communities to understand risk by reference to existing structure loss

Risk MAP Products

Contributing Hazard Factors

Highlights areas of concern identified throughout project



FIS Reports and DFIRM Maps

DFIRM and FIS will continue to fulfill regulatory requirements and support the NFIP

Discovery

Discovery is the process of data collection and analysis with the goal of initiating a hazard risk or mitigation project and risk discussions within the watershed

When:

- After an area/watershed has been prioritized
- Before a Risk MAP project is scoped or funded

Required for new and updated...

- Flood studies
- Flood risk assessments
- Mitigation planning technical assistance projects

Why:

- Increases visibility of flood risk information, education, involvement
- Helps inform whether a Risk MAP project will occur in the watershed



Okanogon & Wenatchee Discovery

- **Federal and State Data Collection**
- **Local Issues: Identify Risk MAP Needs**
 - Need support with mitigation planning?
 - Need mitigation projects?
 - Need new flood study data?
 - Need training on floodplain management?
 - Need support developing a hazard risk outreach program?
 - What else can FEMA do to help your community become resilient?
- **Pre-Discovery Interviews: March/April 2015**
- **Discovery Meetings: May 4-6, 2015**
- **Risk MAP Project(s) Identified**
- **Possible FEMA Funding Allocated for Risk MAP Project**

Discovery Interview

- **Local Contacts**
- **Data**
 - LiDAR
 - Local or Regional GIS Data
- **Mitigation Planning**
 - Desired Mitigation Projects
- **Local Hazards**
 - Earthquakes
 - Wildfires
 - Landslides
 - Severe Storms
 - Flooding
- **Levees**
- **Environmentally Sensitive Areas**
- **Communications and Outreach**
- **Compliance and Training**

Mitigation Planning		
How would you describe your level of involvement with the development of the mitigation plan? (Considerable, Moderate, Minimal)	Do you need assistance with mitigation planning in your community? (Yes, No, Possibly)	Mitigation Planning Comments, Explanations, Questions

Questions?

FEMA

- **Amanda Siok, Risk Analyst, amanda.siok@fema.dhs.gov**
- **Kristen Meyers, Mitigation Planner, kristen.meyers@fema.dhs.gov**
- **Ted Perkins, Regional Engineer, dwight.perkins@fema.dhs.gov**

WASHINGTON

- **Jerry Franklin, State Risk MAP Coordinator, jfra461@ecy.wa.gov**
- **Michelle Gilbert, Floodplain Management Specialist, migi461@ecy.wa.gov**

STARR

- **Emily Whitehead, emily.whitehead@stantec.com**
- **Troy Sova, troy.sova@stantec.com**
- **Becca Fricke-Croft, becca.croft@starr-team.com**